

## Approvals & Disclaimer



The information contained herein is offered in good faith and is believed to be accurate. However, because conditions and methods of use of our products are beyond our control, this information should not be used in substitution for customer's tests to ensure that Chroma-Q products are safe, effective, and fully satisfactory for the intended end use. Suggestions of use shall not be taken as inducements to infringe any patent. Chroma-Q sole warranty is that the product will meet the Chroma-Q sales specifications in effect at the time of shipment. Your exclusive remedy for breach of such warranty is limited to refund of purchase price or replacement of any product shown to be other than as warranted.

Chroma-Q reserves the right to change or make alteration to devices and their functionality without notice due to on-going research and development.

The Chroma-Q Studio Force has been designed specifically for the lighting industry. Regular maintenance should be performed to ensure that the products perform well in the entertainment environment.

If you experience any difficulties with any Chroma-Q products please contact your selling dealer. If your selling dealer is unable to help please contact [support@chroma-q.com](mailto:support@chroma-q.com). If the selling dealer is unable to satisfy your servicing needs, please contact the following for full factory service:

### Outside North America:

Tel: +44 (0)1494 446000

Fax: +44 (0)1494 461024

[support@chroma-q.com](mailto:support@chroma-q.com)

### North America:

Tel: +1 416-255-9494

Fax: +1 416-255-3514

[support@chroma-q.com](mailto:support@chroma-q.com)

For further information please visit the Chroma-Q website at [www.chroma-q.com](http://www.chroma-q.com).

Chroma-Q is a trademark, for more information on this visit [www.chroma-q.com/trademarks](http://www.chroma-q.com/trademarks).

The rights and ownership of all trademarks are recognised.

# Radio Installation Guide

User Installed Radio Card  
for

Chroma-Q®  
Color Force II™ 72/48  
and  
Studio Force II™ 72/48



**Chroma-Q®**  
BRILLIANT SOLUTIONS

For a full product manual please visit [www.chroma-q.com](http://www.chroma-q.com)  
Part Number: CHCF272RGBA / CHCF248RGBA / CHCF212RGBA / CFSFV72NF /  
CFSFV48NF  
Model: 641-3000 / 641-2000 / 641-5000 / 641-4000

This Guide provides the instructions to install the Radio Card option into the Chroma-Q Studio Force/ Color Force. For radio operation, please consult the User Manual for the Studio/Color Force fixture.

## Tools Required

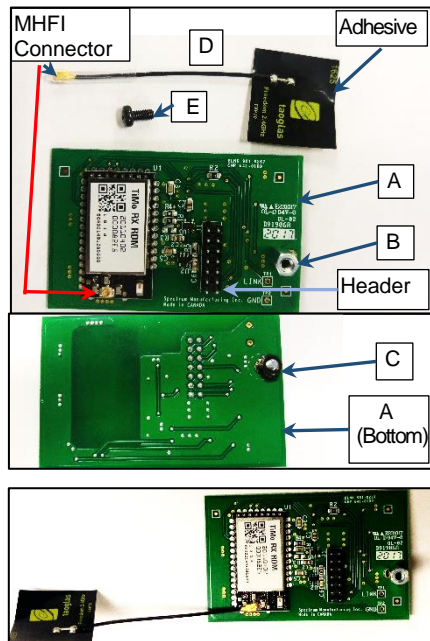
- #1 Phillips head screwdriver or bit
- 5.5 mm nut driver or bit

## Included in the Kit (P/N 641-9070)

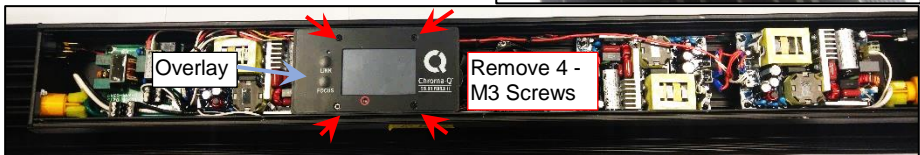
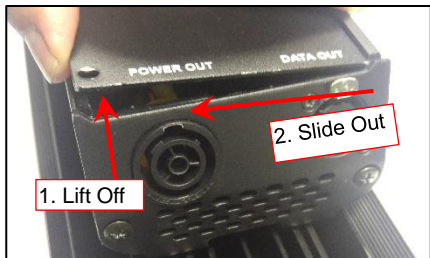
- A. RF PCB (P/N 641-0109)
- B. M3X10 Standoff (P/N 430-4110-1)
- C. M3 Hex Nut (P/N 430-3203-0)
- D. Antenna (P/N 900-1319)
- E. M3 Philips Screw (P/N 430-1206-0)
- F. Guide (P/N 641-0902)

## Installation

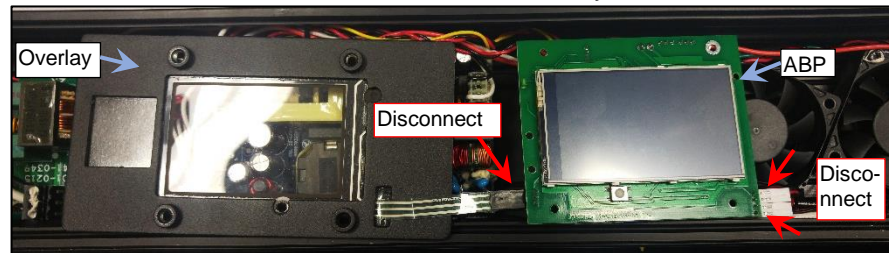
1. RF PCB of the Kit is connected to standoff (B) by a M3 Hex Nut (C). Loosen the nut so that the standoff can slide. Connect the antenna to the RF PCB.
2. Place the unit's acrylic side down on a surface that will not scratch the lens or damage the unit. Carefully remove the Self Tap Philips Screws (ST 3.5 X9.5) those secure the back cover.



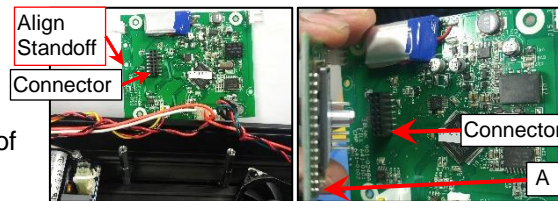
3. Carefully remove the back cover by lifting off the side towards you and slide out. Remove the 4 M3 Philips Screws those secure the overlay.



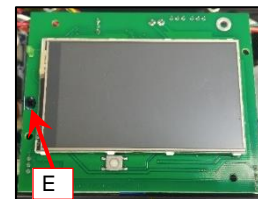
4. Flip the overlay on the left side of the Address Board PCB (ABP) as shown. Disconnect the connectors to the overlay and the fans.



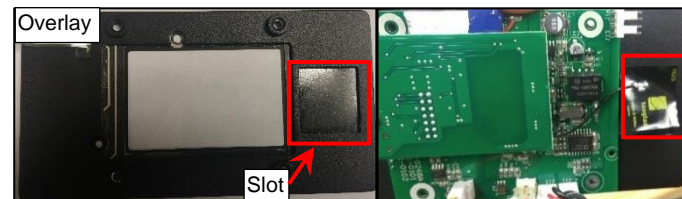
5. Turn the Address Board PCB (ABP) so that the display is facing away. Attach the Header of RF PCB with the Connector of ABP so that the standoff aligns with the indicated hole of ABP.



6. Slide the Standoff (B) so that it is aligned with the hole of Address Board PCB and secure it with the provided M3 Screw (E). Tighten the M3 Nut (C).



7. Attach the adhesive of the antenna inside the slot of the overlay. Antenna must not be over metal (i.e. outside the slot).



8. Reassemble the unit in the reverse order. Please remember:
  - Do not over-torque the screws. When using a power driver, set torque to 5.5lb-in.
  - Be sure the placement of the back cover is even before replacing the screws.
  - Check all corners before proceeding.
  - Test for operation of unit prior to returning to service.